



A WORLD OF WOODCHIPPERS

Spareparts

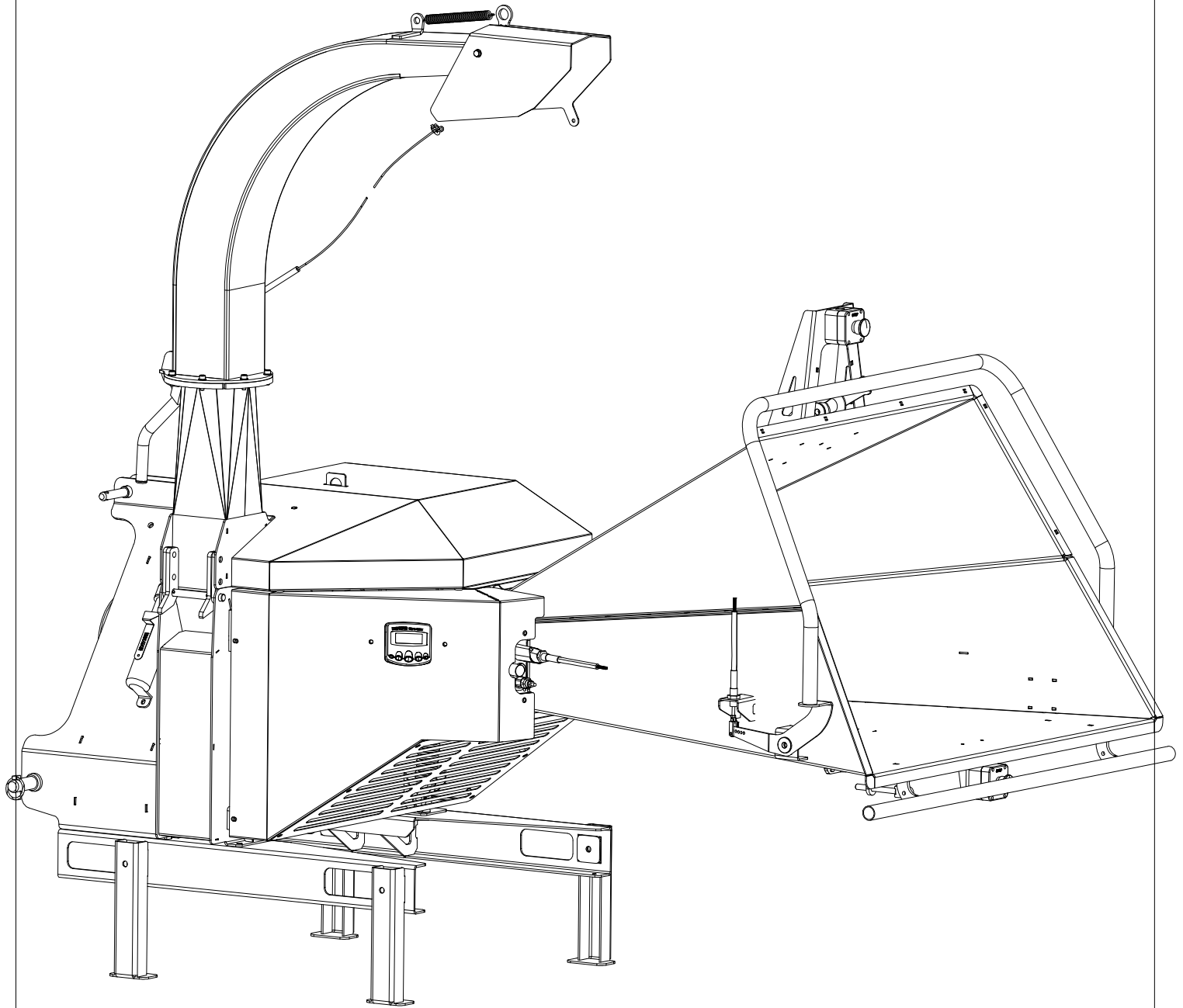
Item no: **150I00SA**
Model: **NHS 150i/sa**
(speedUp)

Variant: **SafeTouch**
Chipping disc: **EasyCut**

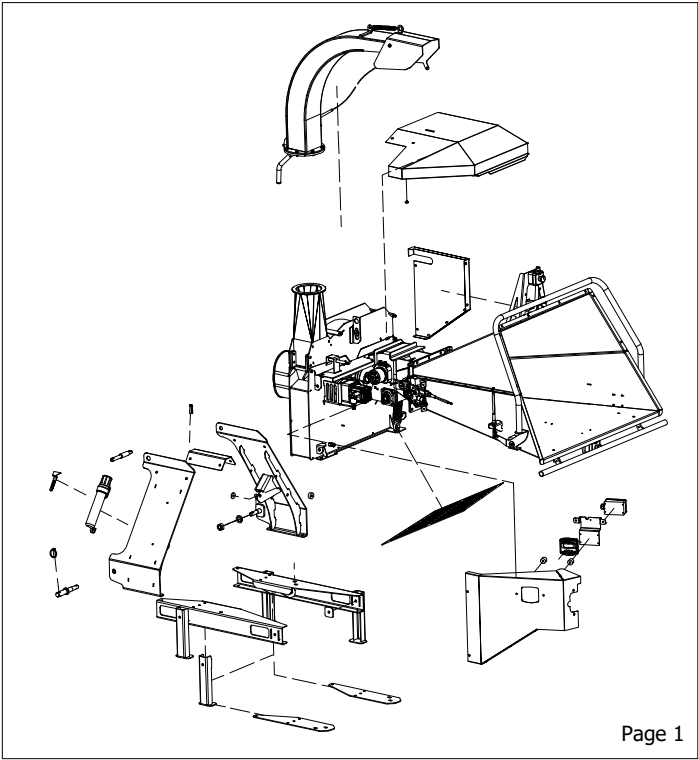
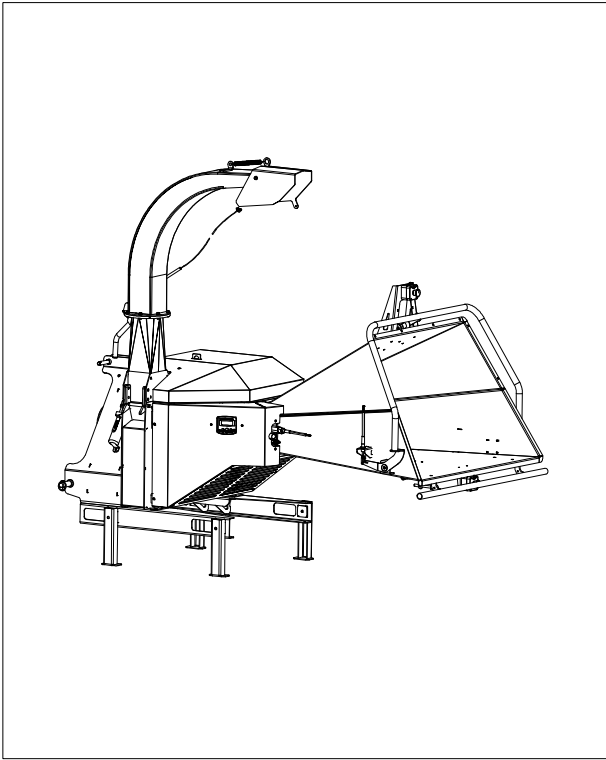
Machine no:
8684 - Present



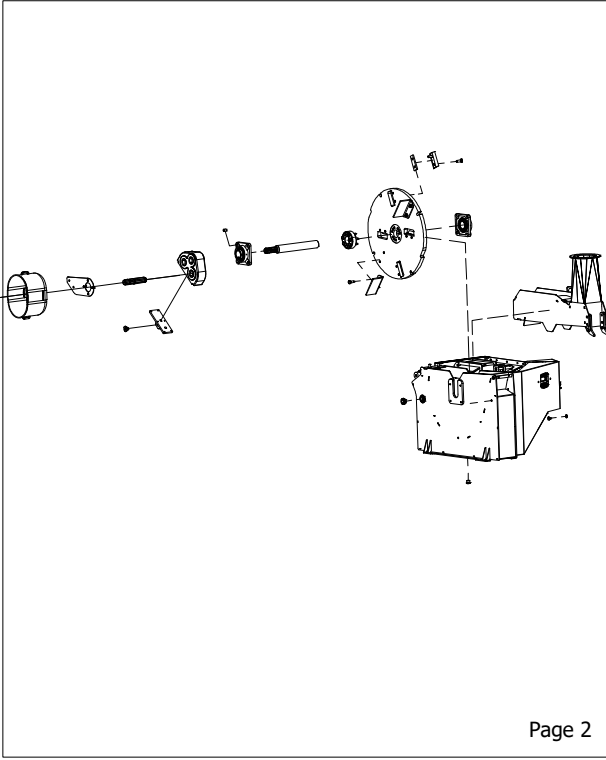
Innovation through generations



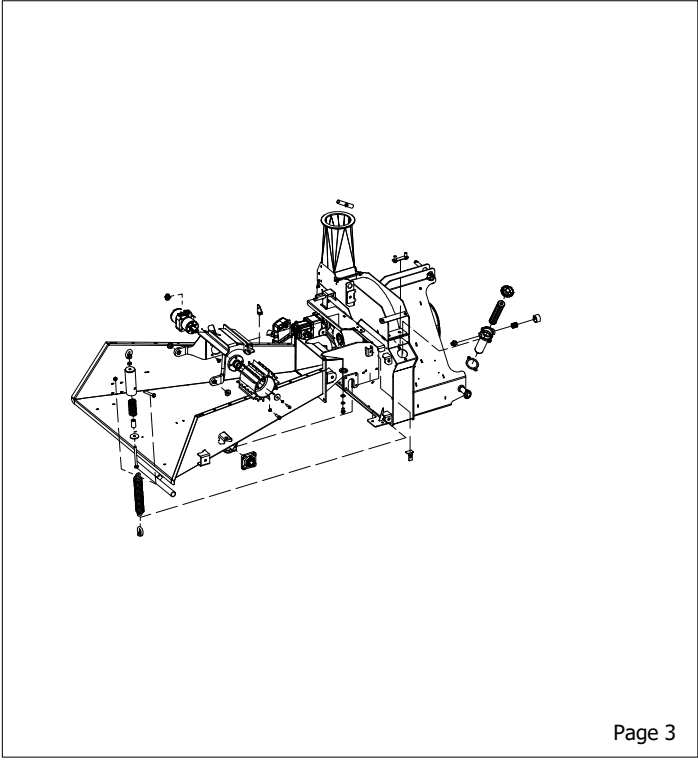
NHS 150i/sa



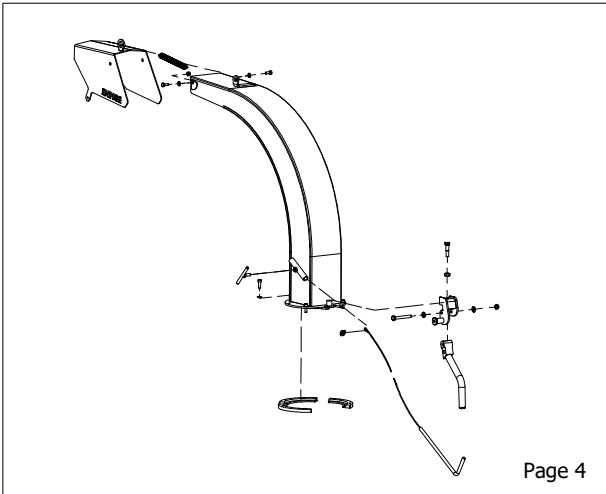
Page 1



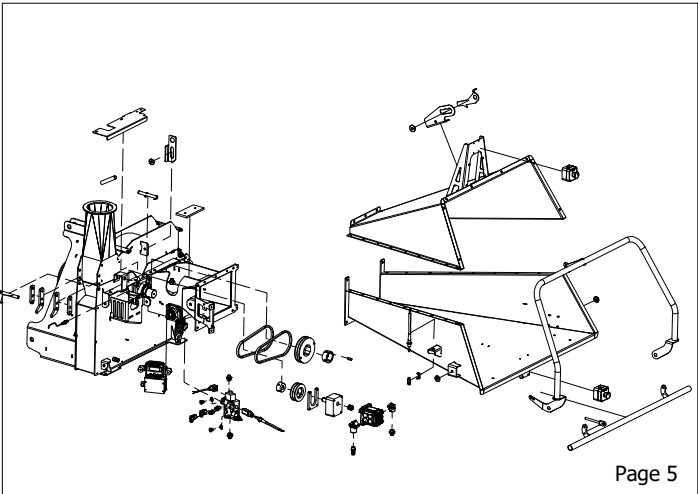
Page 2



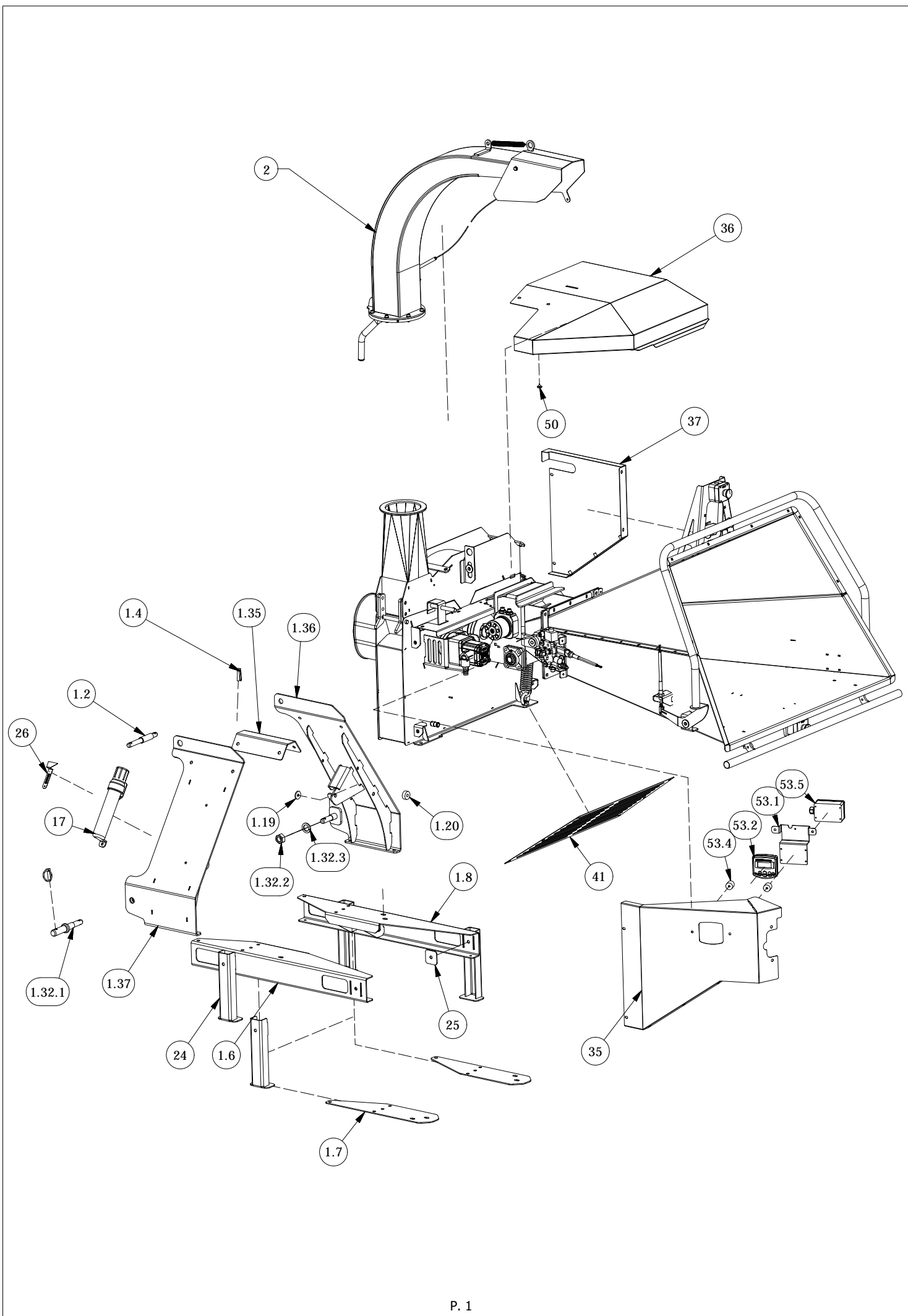
Page 3



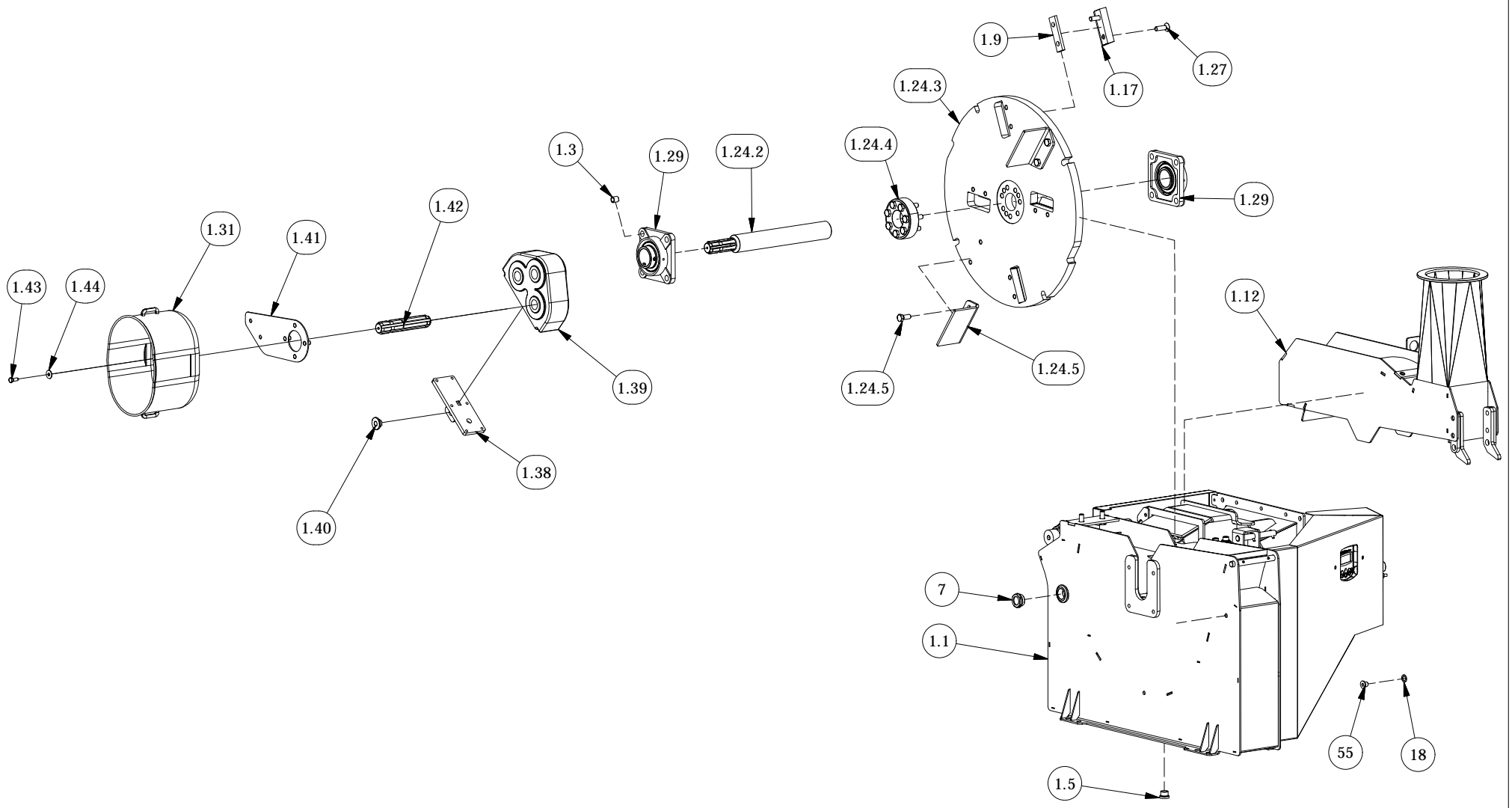
Page 4



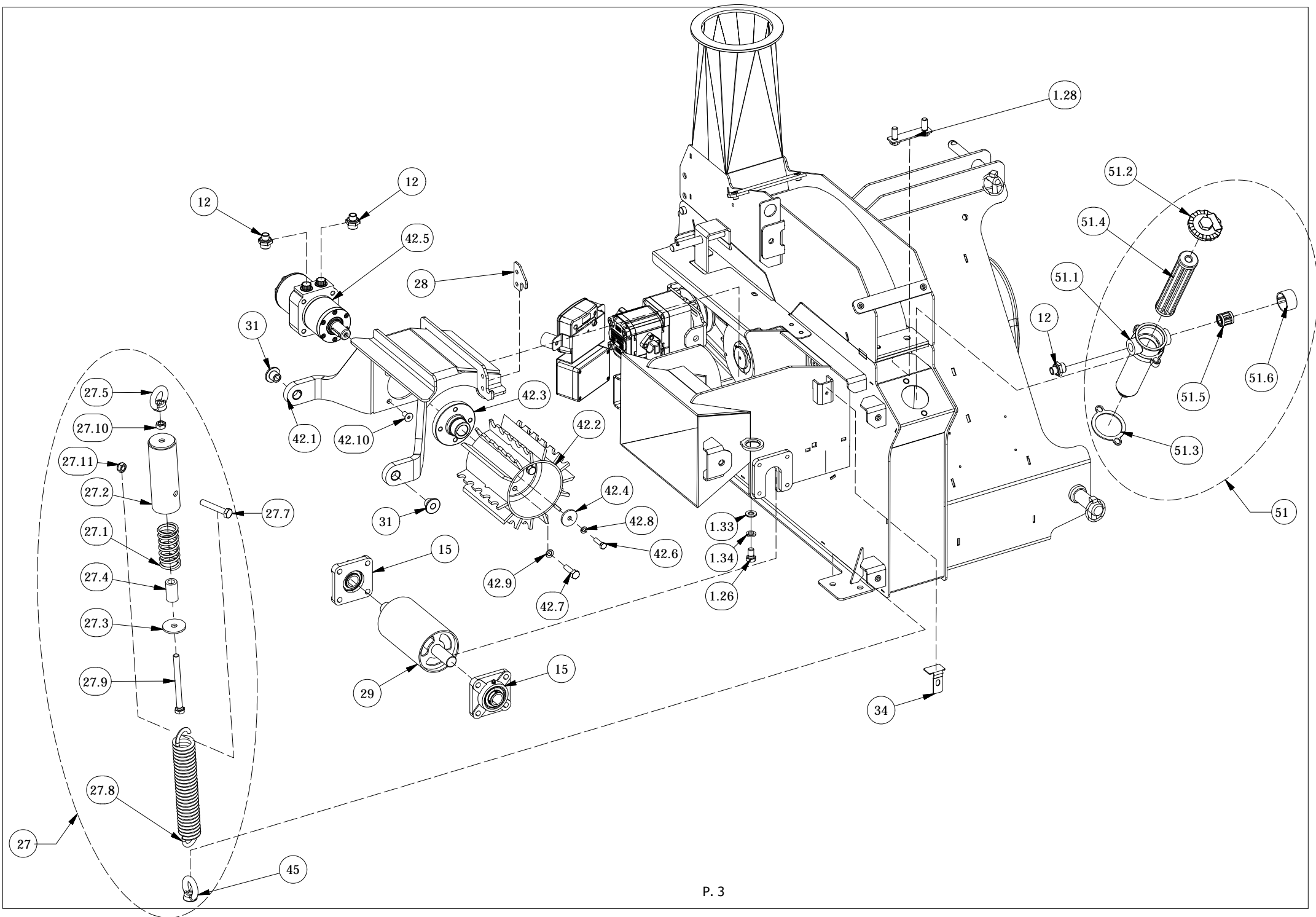
Page 5



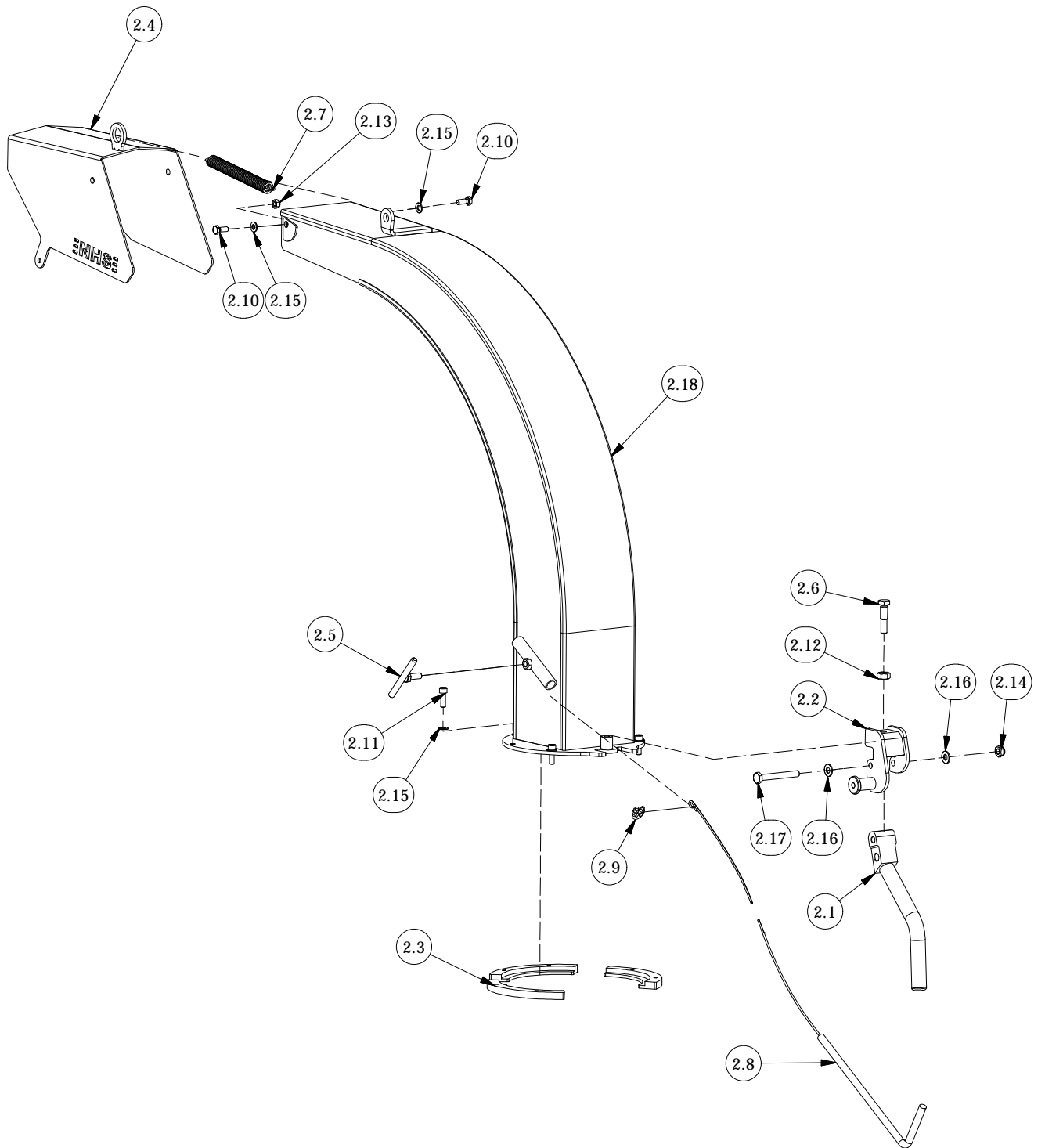
Position No.	Item no.	Pcs.	Description	Page
1.2	00001800	1	Top link bolt 25/19mm	1
1.4	00101000	3	Linch pin 10x45mm	1
1.6	15000710	1	Base piece, left	1
1.7	15000711	2	Clamping plate for base piece	1
1.8	15000720	1	Base piece, right	1
1.19	15011415	2	Washer $\varnothing 11/\varnothing 35 \times 4$ mm	1
1.20	15011416	2	Spacer $\varnothing 35/\varnothing 12 \times 15$ mm.	1
1.32.1	00159500	1	Lower Link Pin - Double Std. $\varnothing 28/\varnothing 25$	1
1.35	15011465	1	Assembly bracket	1
1.36	15011450	1	Three-point suspension, right [Speed-Up]	1
1.37	15011460	1	Three-point suspension, left [SpeedUp]	1
2	00008400	1	Discharge pipe for NHS 150 -180, Standard	1
17	00149900	1	Tube f/ operators manual $\varnothing 55$	1
24	15000730	4	Leg f/ base piece - NHS 150	1
25	15000735	4	Clamping plate f/ legs	1
26	15001710	1	Gauge blade f/ Counter blade setting	1
35	15014810	1	Shielding, left side	1
36	15014820	1	Shield, upper	1
37	15014830	1	Shielding, right	1
41	15024815	1	Shielding, lower	1
50	15102700	3	Rubber plug f/ $\varnothing 6,5$	1
53.1	15001300	1	Mounting plate f/ control panel	1
53.2	00151700	1	Info-controller f/ ABS	1
53.4	00109600	2	Vibration damper 30/30-M8	1
53.5	15104700	1	Terminal Box f/ Easy Line	1



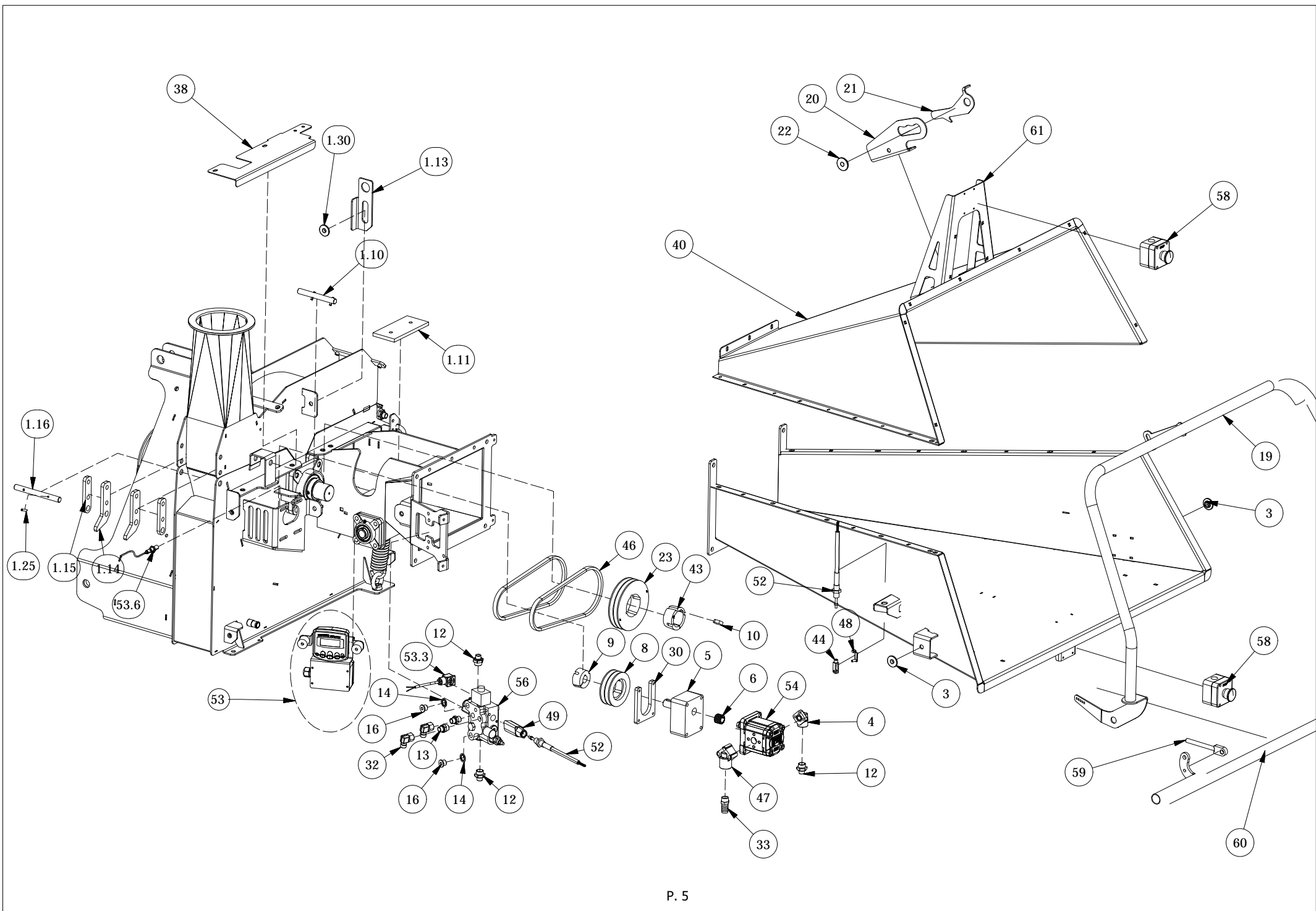
Position No.	Item no.	Pcs.	Description	Page
1.1	15011100	1	Lower part - Chipping Disc Housing	2
1.3	00010800	4	Bushing f/UCF210 bearing	2
1.5	00109700	1	Plug 1/2"	2
1.9	15000908	4	Base f/ blade - 8 mm	2
1.12	15011120	1	Top f/ Chipping Disc housing	2
1.17	15011200	4	Blade 100 mm. EasyCut	2
1.24.2	15004600	1	Shaft for Chipping Disc	2
1.24.3	15000900	1	Chipping Disc f/ NHS 150	2
1.24.4	15107800	1	Locking assembly f/ Chipping Disc	2
1.24.5	R10019	4	M12x30 Screw FZB 8:8 - DIN 933	2
1.27	R10395	8	Screw f/Blade M12 DIN7991	2
1.29	40100300	2	Bearing f/ Chipping Disc	2
1.31	15100600	1	PTO shield - plastic	2
1.38	48011600	1	Locking plate cpl. f/ speedup gear	2
1.39	00105000	1	Speed-up gear IMR1 - 1:2	2
1.40	00011500	1	Bushing f/ Safety Bar	2
1.41	15011432	1	Holder f/PTI shield (Speed-up gear)	2
1.42	00105007	1	Spline shaft f/ SpeedUp gear	2
1.43	R10007	4	M8x20 set Screw FZB 8.8	2
1.44	R10313	4	Washer Ø8, 4/24x2mm	2
7	00105500	1	Sightglass 1"	2
18	10102700	1	Sealing washer RG 1/4"	2
55	00109650	1	Plug 1/4"	2



Position No.	Item no.	Pcs.	Description	Page
1.26	R10139	2	M12x20 Hex head screw 8.8 FZB	3
1.28	15003500	1	Double bolt f/ Chipping Disc housing	3
1.33	R10316	2	Washer Ø13/24x2,5	3
1.34	R10307	2	Spring washer Ø12 DIN 127B FZB	3
12	00112900	6	Fitting 1/2" x 12 mm	3
15	00132900	2	Bearing f/Feedroller 25mm	3
27	15002600	1	Spring package - standard 0/80 kg.	3
27.1	15101150	1	Compression spring f/ feed roller, Standard	3
27.2	15002610	1	Spring cap	3
27.3	15002601	1	Washer Ø50x12,5x4mm	3
27.4	15002602	1	Bushing	3
27.5	15102600	1	Eye Nut M12	3
27.7	R10381	1	M12x70 Hex head screw FZB DIN 8.8	3
27.8	48100400	1	Spring f / feed roller	3
27.9	R10394	1	M12x140mm Bolt FZB	3
27.10	R10105	1	M12 Nut FZB 8.8 Din 934	3
27.11	R10205	1	M12 Lock nut FZB 8.8	3
28	15002710	1	Lock f/ Spring set	3
29	15003300	1	Feedroller - Fixed	3
31	15011500	2	Bushing f/tilt console	3
34	15011920	1	Spacer f/tilt console	3
42.1	15002700	1	Tilt Console	3
42.2	15003200	1	Feedroller - moveable	3
42.3	15003400	1	Motor flange f/ Feedroller	3
42.4	15003410	1	Stop washer f/ Motor flange	3
42.5	15122800	1	Oilmotor	3
42.6	R10010	1	M8x30 Set screw FZB 8.8	3
42.7	R10015	4	M10x35 Hex head screw FZB 8.8	3
42.8	R10305	1	Spring washer Ø8 mm	3
42.9	R10306	4	Spring washer Ø10 mm	3
42.10	R10326	4	M10x20 Socket screw	3
45	15102600	1	Eye Nut M12	3
51	15104100	1	Return Filter	3
51.2	15104104	1	Cover f/ Return filter - Easyline	3
51.3	15104102	1	Gasket f/ Returnfilter	3
51.4	15104101	1	Filter Element f/ Return Filter	3
51.5	15104103	1	Breather filter	3



Position No.	Item no.	Pcs.	Description	Page
2.1	00008410	1	Handle f/ lock	4
2.2	00008420	1	Lock F/ Discharge Pipe	4
2.3	00008430	3	Clamping piece	4
2.4	00002500	1	Cap f/ Discharge pipe	4
2.5	00002300	1	Bolt f/ Adjusting rod	4
2.6	00008425	1	M12 Adjusting screw	4
2.7	00100100	1	Spring f/ flap on Discharge Pipe	4
2.8	00008435	1	Adjusting rod f/ cap (cpl)	4
2.9	00101400	1	Wire lock 3/16"	4
2.10	R10007	2	M8x20 set Screw FZB 8.8	4
2.11	R10041	6	M8x25 Allen screw	4
2.12	R10105	1	M12 Nut FZB 8.8	4
2.13	R10203	2	M8 Lock nut FZB 8.8	4
2.14	R10204	1	M10 Lock nut FZB 8.8	4
2.15	R10314	10	Washer Ø8mm	4
2.16	R10315	2	Washer 3/8" Ø10,5/21x2,0mm FZB	4
2.17	R10351	1	M10x80 Bolt FZB 8.8	4
2.18	00008540	1	Discharge pipe (Main part), raw	4



Position No.	Item no.	Pcs.	Description	Page
1.10	15005900	1	Pin f/ Chipping Disc lock	5
1.11	15010300	1	Counter-blade - NHS150 Series	5
1.13	15011125	1	Lifting bracket	5
1.14	15011140	2	Connector plate (w./ stop)	5
1.15	15011142	2	Spacer f/ Connector plate	5
1.16	15011146	1	Hinge shaft f/ Chipping Disc housing	5
1.25	R10068	4	Clamping pin Ø5x25	5
1.30	00011410	1	Bushing f/ Safetybar	5
3	00011410	2	Bushing f/ Safetybar	5
4	00104100	1	Connection piece 1/2"	5
5	00105300	1	Pump bearing support f./ GR2 pump	5
6	00105410	1	Spline Bushing f/ GR 2 pump Z15	5
8	00107500	1	Pulley TL A 100x2	5
9	00107700	1	Bushing - Ø22mm	5
10	00111300	1	Feather key 14x9x30	5
12	00112900	6	Fitting 1/2" x 12 mm	5
13	00124000	2	Fitting 3/8" x 12mm	5
14	00126100	2	Sealing washer RG 3/8" Bonded seal	5
16	00145800	2	Plug 3/8"	5
19	15000100	1	Safety bar f/ NHS 150 Easy Line	5
20	15000140	1	Positioning bracket f/ NHS 150	5
21	15000142	1	Lock f/ Positioning bracket	5
22	15000145	1	Bushing f / lock - Ø24x10	5
23	15000200	1	Pulley w / M8 for ABS screw	5
30	15011135	1	Threaded flange f / Oil pump	5
32	00138100	2	Adjustable angle 12x12 mm 90°	5
33	00003900	1	Fitting 1/2"	5
38	15014835	1	Cover by Bearing f/ Chipping disc	5
40	15016020	1	Funnel - Upper part	5
43	15100200	1	Bushing, Ø50 f/ Pulley - Large	5
44	15101500	1	Clevis fork M6x24	5
46	72106100	2	V-belt for NHS150 Series	5
47	15101200	1	port flange 1/2" [40mm/90°]	5
48	15101510	1	ES-bolt M6x24	5
49	15100720	1	Housing f/ Wire M16	5
52	15100710	1	Wire f/ Monoblock Valve	5
53	15004700	1	Electrical control cpl. NHS EasyLine	5
53.3	00114701	1	Connector f/ Solenoid	5
53.6	00151750	1	Sensor f / ABS - InfoCon [XL without Plug]	5

